

16 Clifton Close, Bicester, Oxon, OX26 6GQ

£1,450 PCM - 8th January 2026

- First floor apartment
- Balcony
- Council Tax B
- Two bedrooms
- Allocated parking
- EPC rating B
- Two bathrooms
- Unfurnished
- Mains gas electricity and water

16 Clifton Close, Bicester OX26 6GQ

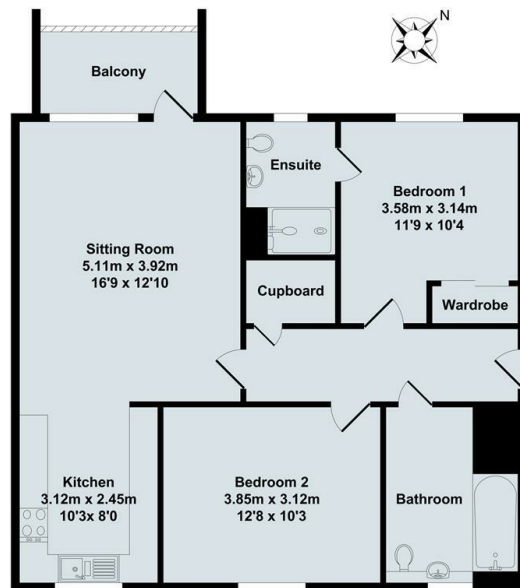
Located on this development built late 2019, a two bedroom first floor apartment finished to a very high standard and in excellent condition throughout. Walking distance of town centre, stations and a short drive to J9 of the M40. Master bedroom with ensuite shower room, Double bedroom, Bathroom with shower over, Open plan style Living/Dining room/Kitchen - kitchen fully fitted with integrated appliances. Gas CH. Balcony. Parking for 1 car. Unfurnished



Council Tax Band: B

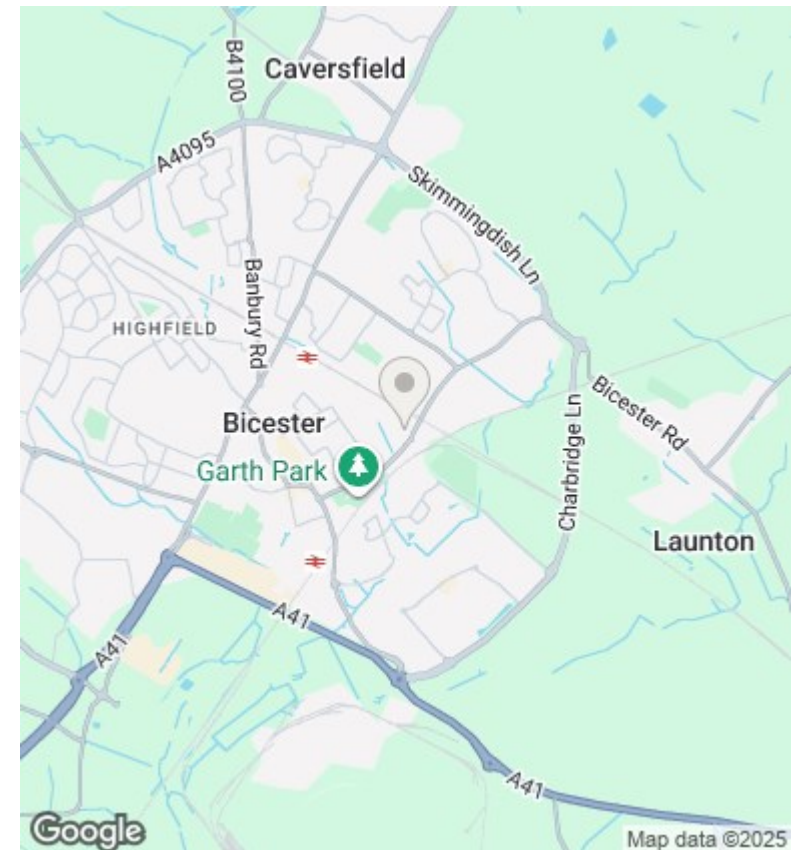


Located on this new development built in 2019, a two bedroom first floor apartment finished to a very high standard. Walking distance of town centre, stations and a short drive to J9 of the M40. Unfurnished. Master bedroom with fitted wardrobe and ensuite shower room, Further double bedroom, Bathroom with shower over, Open plan style Kitchen/Living/Dining room with French doors to covered balcony, Kitchen is fully fitted with integrated appliances - double electric oven, gas hob, fridge/freezer, washer/dryer and dishwasher. Gas CH. BT superfibre (not included) Allocated parking space and bike storage.



Approx. Floor
Area 72.39 Sq.M.
(779 Sq.Ft.)

Total Approx. Floor Area 72.39 Sq.M. (779 Sq.Ft.)



Directions

Viewings

Viewings by arrangement only. Call 01869 226888 to make an appointment.

Council Tax Band

B

Energy Efficiency Rating		
	Current	Potential
Very energy efficient - lower running costs		
(92 plus) A		
(81-91) B	84	84
(69-80) C		
(55-68) D		
(39-54) E		
(21-38) F		
(1-20) G		
Not energy efficient - higher running costs		
England & Wales		EU Directive 2002/91/EC